

Reassemble pump vice versa.
The NIROSTAR TYP 2001 series comes without lateral discs.



Impeller Pump Typ 2000-A



Mortal danger - electric shock!
Disconnect pump from power supply prior to working in it!

Step 1



Release screws, remove cover.

impeller replacement 1

Step 4



Remove O-ring, lateral disc with whole and lid from the rear side. Release safety ring and press out shaft seal.

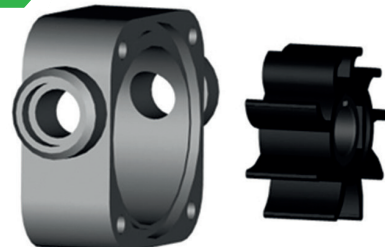
Step 2



Remove lateral disc (without hole) and O-ring.

impeller replacement 2

Step 5



Press impeller out of housing.

impeller replacement 4

Step 3



Remove housing with impeller.

impeller replacement 3

Step 6



Housing with narrow shoulder on top, turn impeller counter clockwise into housing. Push impeller as far up as possible.

impeller replacement 5



Reassemble pump vice versa.
The NIROSTAR TYP 2000 series comes without lateral discs.